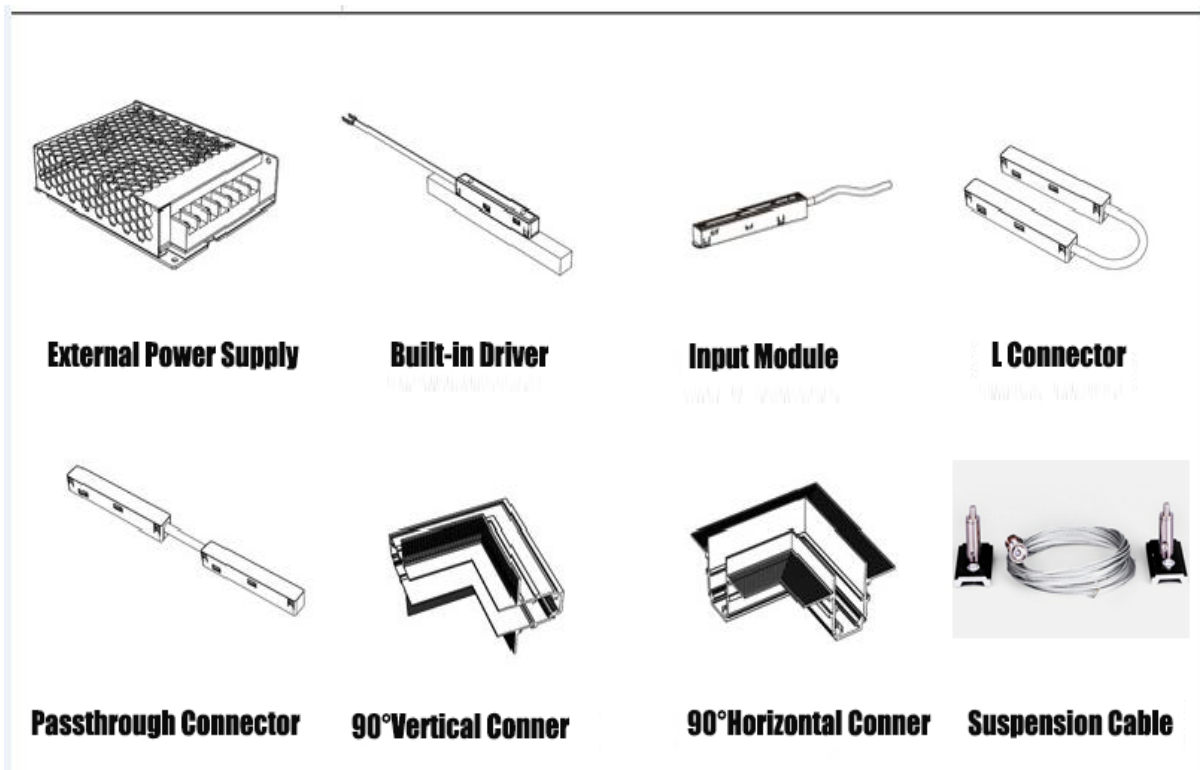
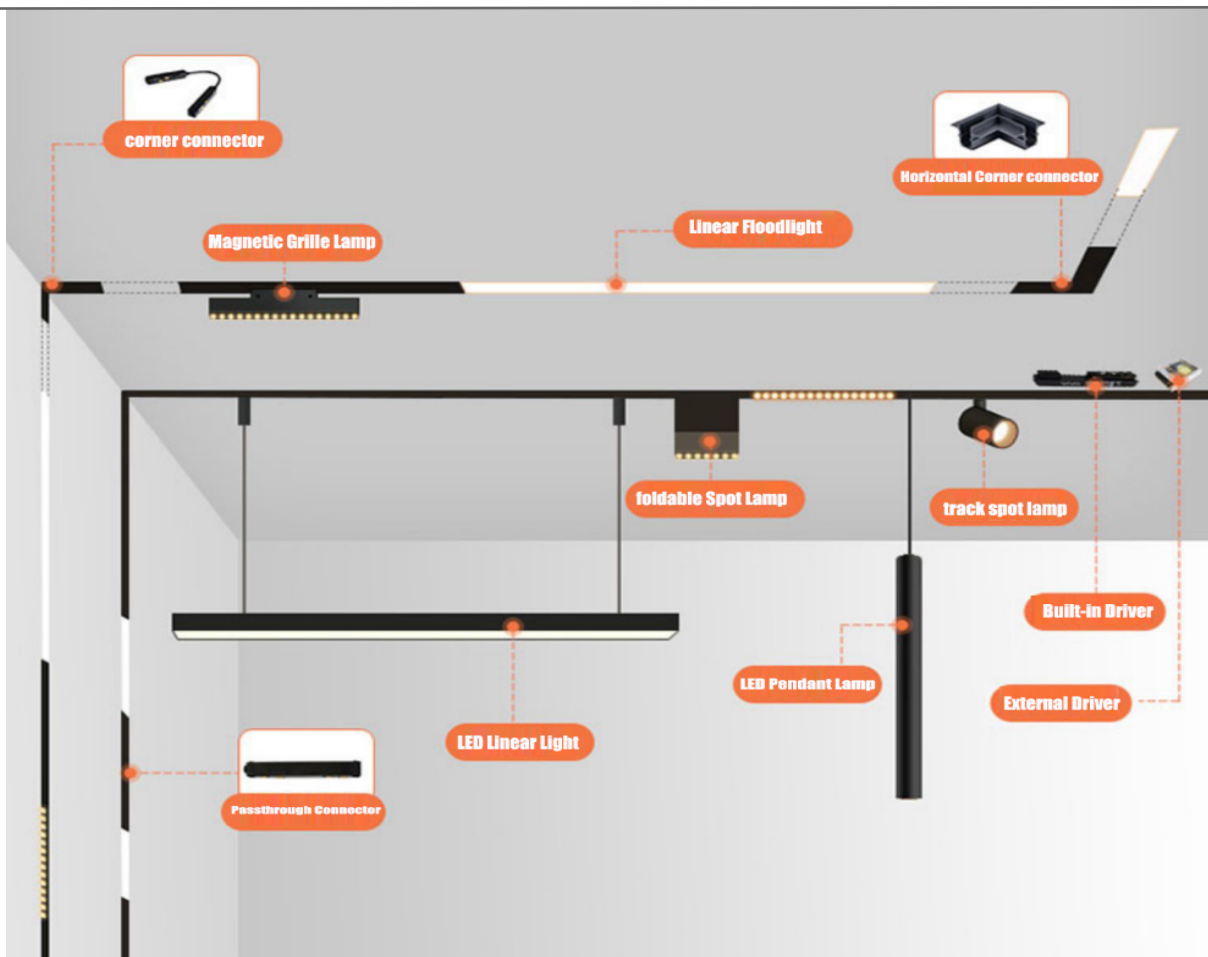
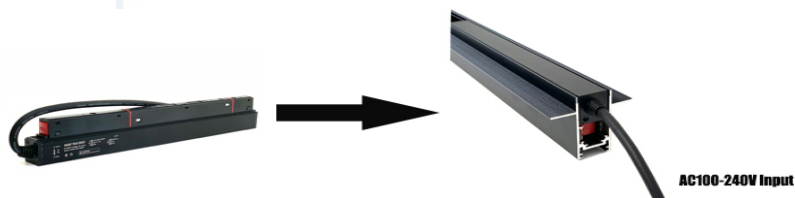




Accessories of Magnetic Track Lights



<<<How to use Built-in Driver?

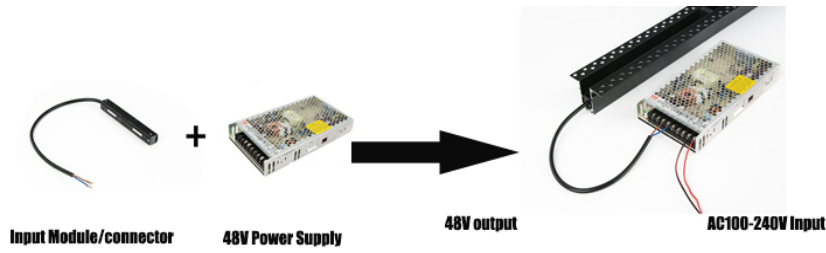


Working at AC100-240V input and DC48 output. Can supply the electricity to the magnetic track lighting system. Suitable for all the installation method. If there is no space for the driver, this is the best choice.



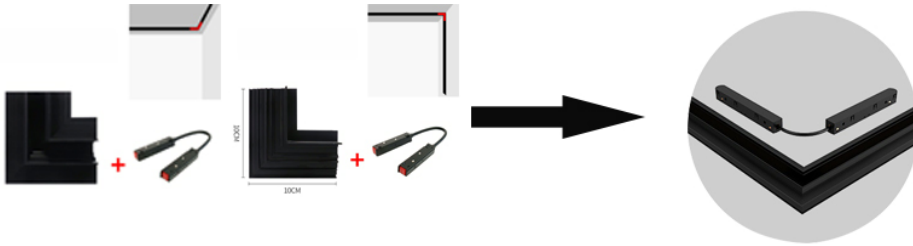
Accessories of Magnetic Track Lights

<<<How to use External Power Supply?



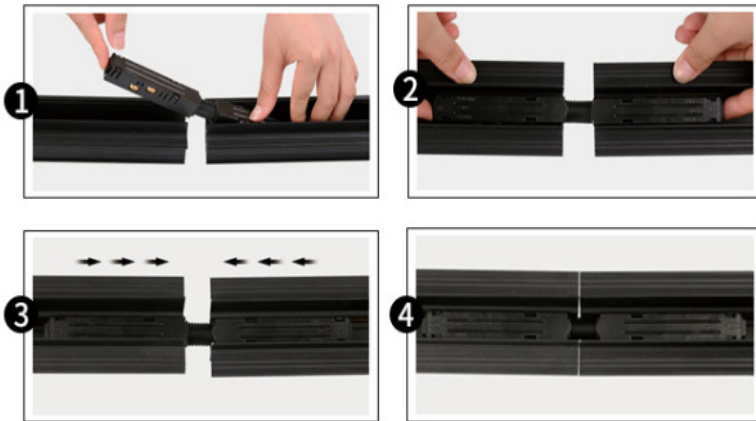
If there is enough space for power supply, it is surely more stable to use external power supply. You can hide it in the ceiling or junction box or other places. But should supply the output DC48V electricity through input module.

<<<How to use L connector?



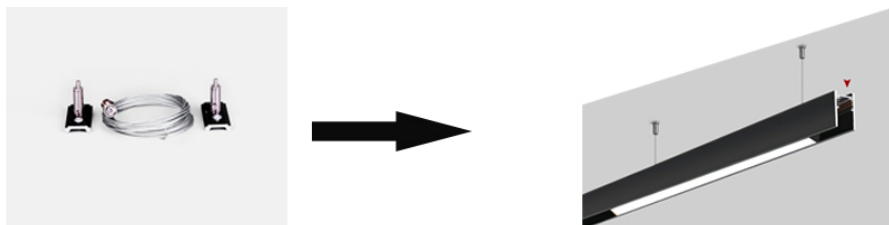
L connector often use at the corner and cooperate closely with horizontal or vertical connector. It recover the electricity connection at the corner of two separate tracks joints.

<<<How to use Passthrough connector?



Current cannot pass through two separate rails on the same horizontal line, we can only use pass-through connectors to allow current to flow from one to the other.

<<<How to use suspension cable?



Suspension cable is made from stainless steel wire and specially for the suspension installation.